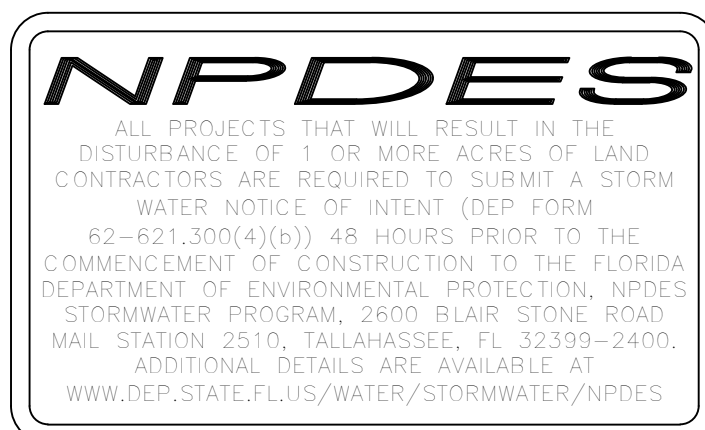


THIS ITEM HAS BEEN DIGITALLY SIGNED
AND SEALED BY DENNIS R. SHULTZ, P.E.
ON Jan 10, 2019

PRINTED COPIES OF THIS DOCUMENT ARE
NOT CONSIDERED SIGNED AND SEALED AND
THE SIGNATURE MUST BE VERIFIED ON ANY
ELECTRONIC COPIES

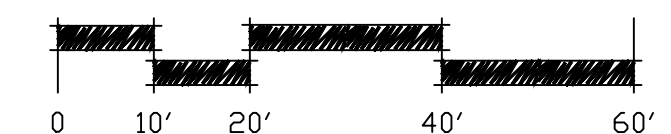


ENGINEERING PLAN NOTES:

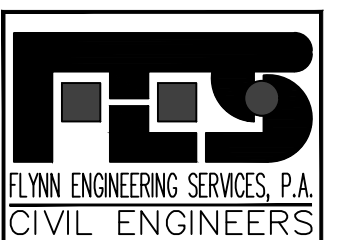
1. ELEVATIONS SHOWN ARE IN NAVD 88 DATUM.
2. EXISTING PAVEMENT MARKINGS ON SR A1A TO REMAIN UNLESS OTHERWISE NOTED. CONTRACTOR TO RESTORE TO EXISTING CONDITIONS IF REQUIRED AFTER CONSTRUCTION ACTIVITIES.
3. EXISTING SIGNAGE TO REMAIN ON SR A1A UNLESS OTHERWISE NOTED.
4. WORK IN FDOT RIGHT-OF-WAY OF SR A1A TO BE AUTHORIZED UNDER CONSTRUCTION AGREEMENT WITH THE CITY OF DELRAY BEACH.
5. FDOT WORK TO COMPLY WITH FDOT DESIGN STANDARD SPECIFICATIONS FY 2018-19.
6. SIDEWALK CROSS SLOPE TO BE DESIGNED AT 1.5% WITH CONSTRUCTION TOLERANCE UP TO 2% CROSS SLOPE.
7. SIDEWALK SLOPE IN DIRECTION OF TRAVEL TO HAVE CONSTRUCTION TOLERANCE UP TO 5%.
8. CONTRACTOR TO ADJUST EXISTING VALVES, BOXES, SIGN POSTS, ETC. IN NEW SIDEWALKS TO MATCH NEW GRADE.
9. ENGINEERING PLANS BASED ON TOPOGRAPHIC INFORMATION PROVIDED ON SURVEY BY AVIROM & ASSOCIATES, INC.
10. PLANS INCLUDE EXISTING DEMO AS REQUIRED TO CONSTRUCT THE NEW IMPROVEMENTS SHOWN WHETHER SPECIFICALLY NOTED OR NOT.
11. CONTRACTOR TO COORDINATE AND SCHEDULE PRE-CONSTRUCTION AND FINAL WALK THRU MEETINGS WITH BOTH FDOT INSPECTOR AND ENGINEER OR RECORD.
12. MILLINGS SHALL BE TRANSPORTED TO THE PALM BEACH OPERATIONS CENTER AT THE PERMITTEE'S EXPENSE.
13. SIDEWALK CURB RAMPS SHALL BE CONSTRUCTED IN ACCORDANCE WITH FDOT STANDARD PLANS INDEX 522-002.

FDOT PERMIT NUMBER 2018-C496-010

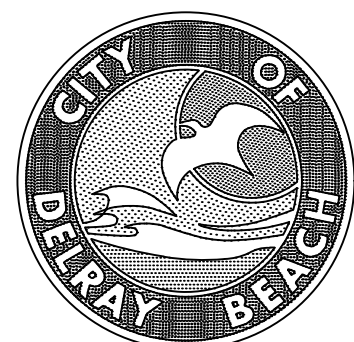
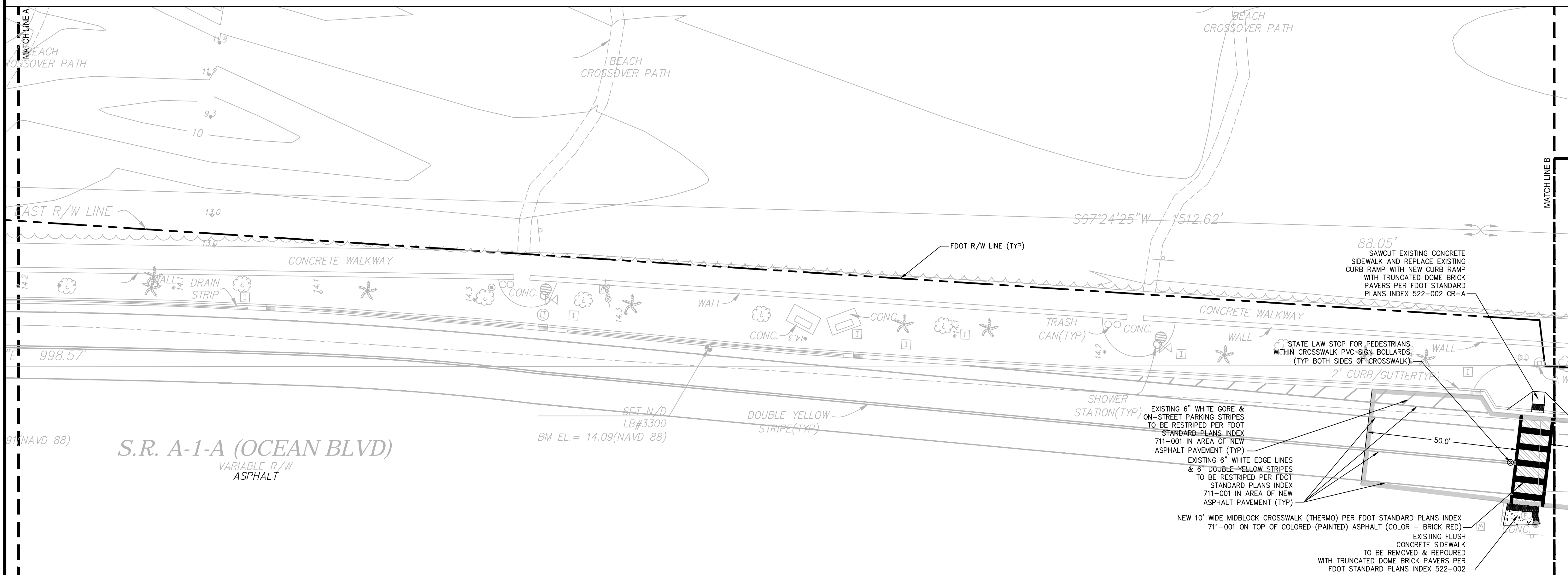
SCALE: 1"=20'-0"



FES# 16-1309.01



241 COMMERCIAL BLVD.
LAUDERDALE BY THE SEA, FL 33308
PHONE: (954) 522-1004
FAX: (954) 522-7630
www.flynnengineering.com
EB# 6578



CITY of DELRAY BEACH
ENVIRONMENTAL SERVICES DEPARTMENT
434 SOUTH SWINTON AVENUE, DELRAY BEACH, FLORIDA 33444
Phone: (561) 243-7322 Fax: (561) 243-7060 www.mydelraybeach.com

LANDSCAPE ARCHITECT
EDSA, INC.
1512 E. BROWARD BOULEVARD
SUITE 110
FORT LAUDERDALE, FLORIDA 33301

ENVIRONMENTAL ENGINEER
OCEAN CONSULTING
340 MINORCA AVENUE
SUITE 6
CORAL GABLES, FLORIDA 33134

SURVEY
AVIROM & ASSOCIATES
50 S.W. 2ND AVENUE
SUITE 102
BOCA RATON, FLORIDA 33432

SEAL

DESIGNED BY
DRAWN BY
CHECKED BY

DATE JANUARY 2019

REVISION

DATE

DESCRIPTION

BEACH MASTER PLAN - PH 2
ISSUED FOR BID

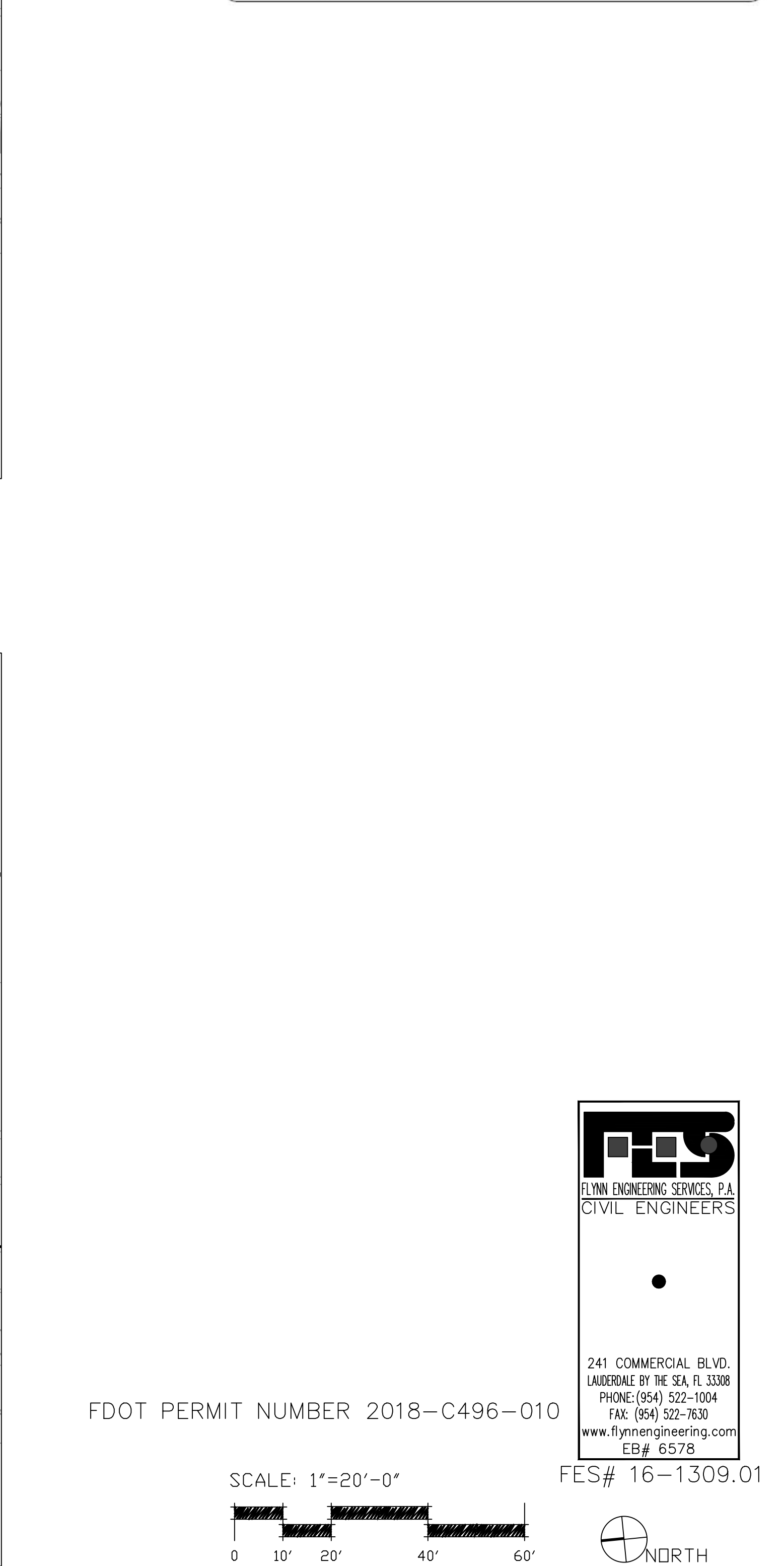
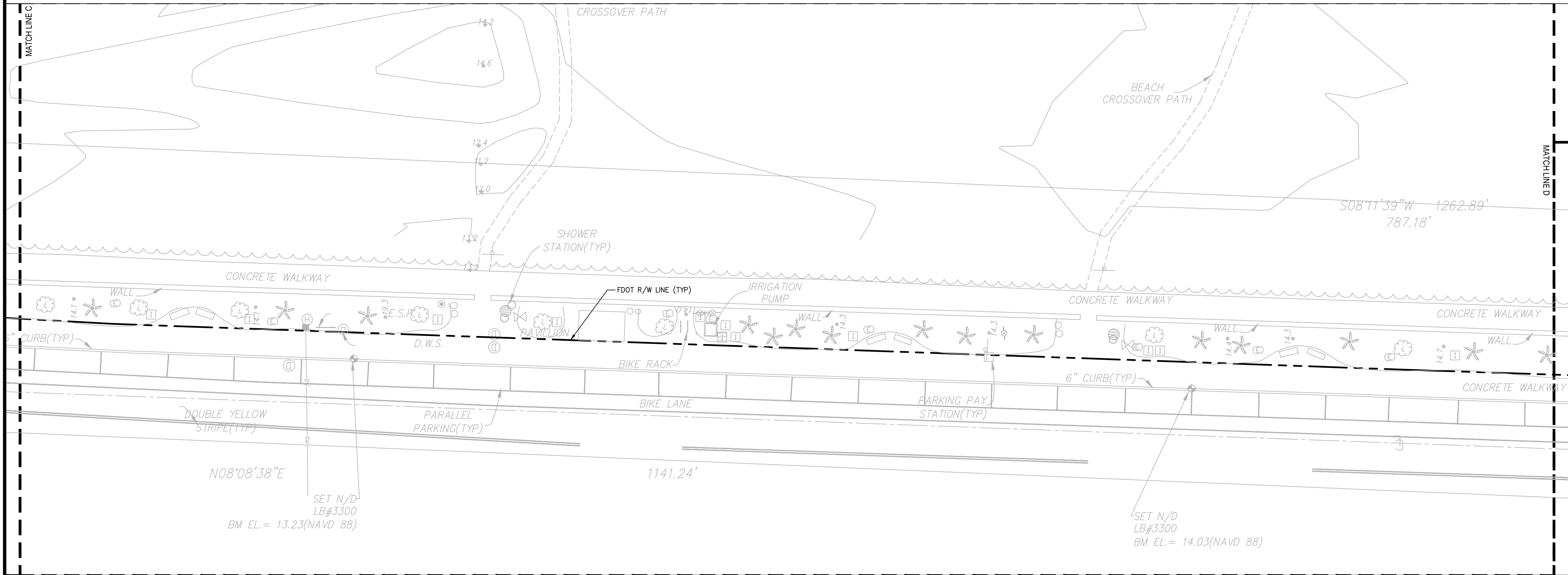
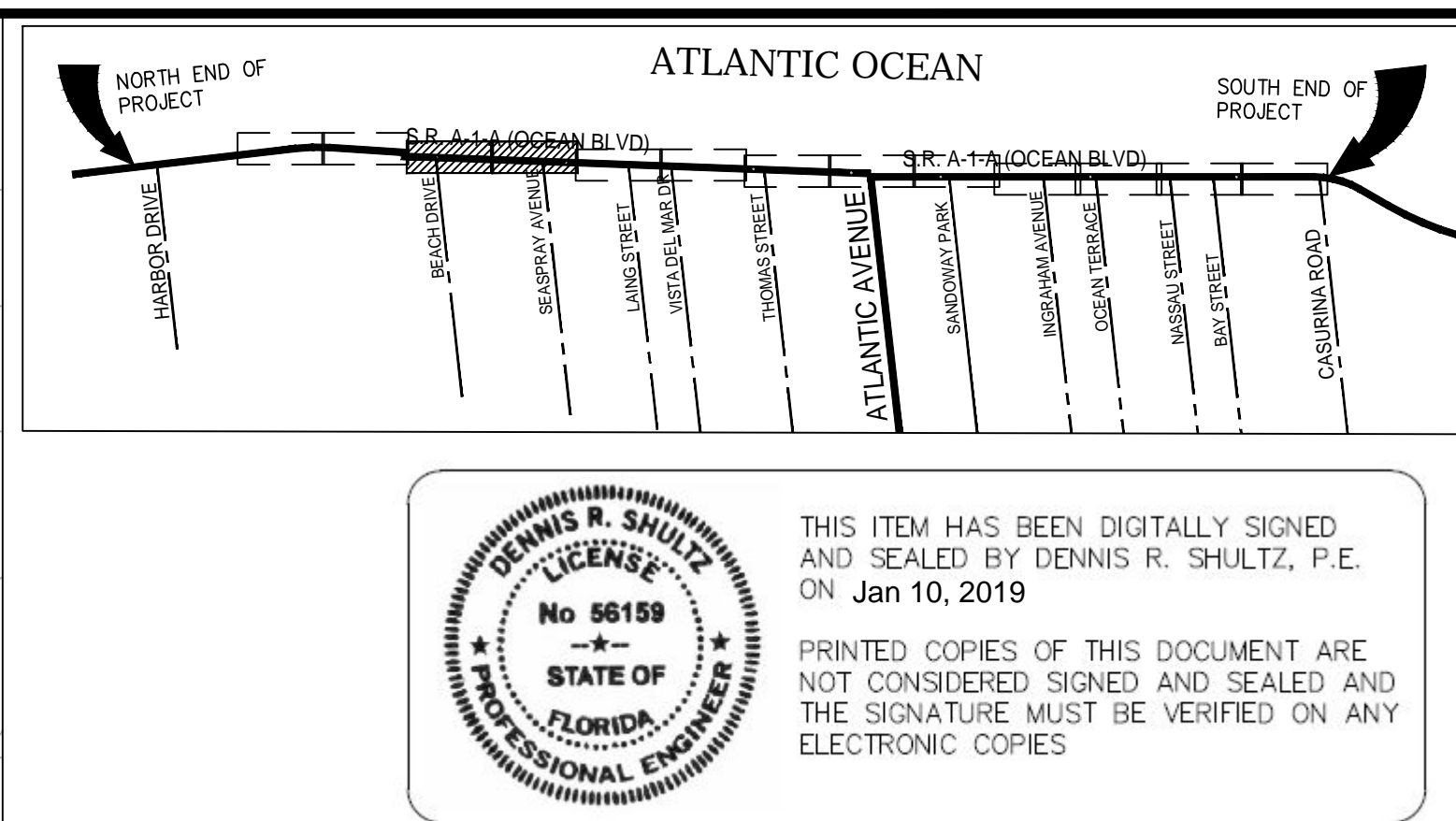
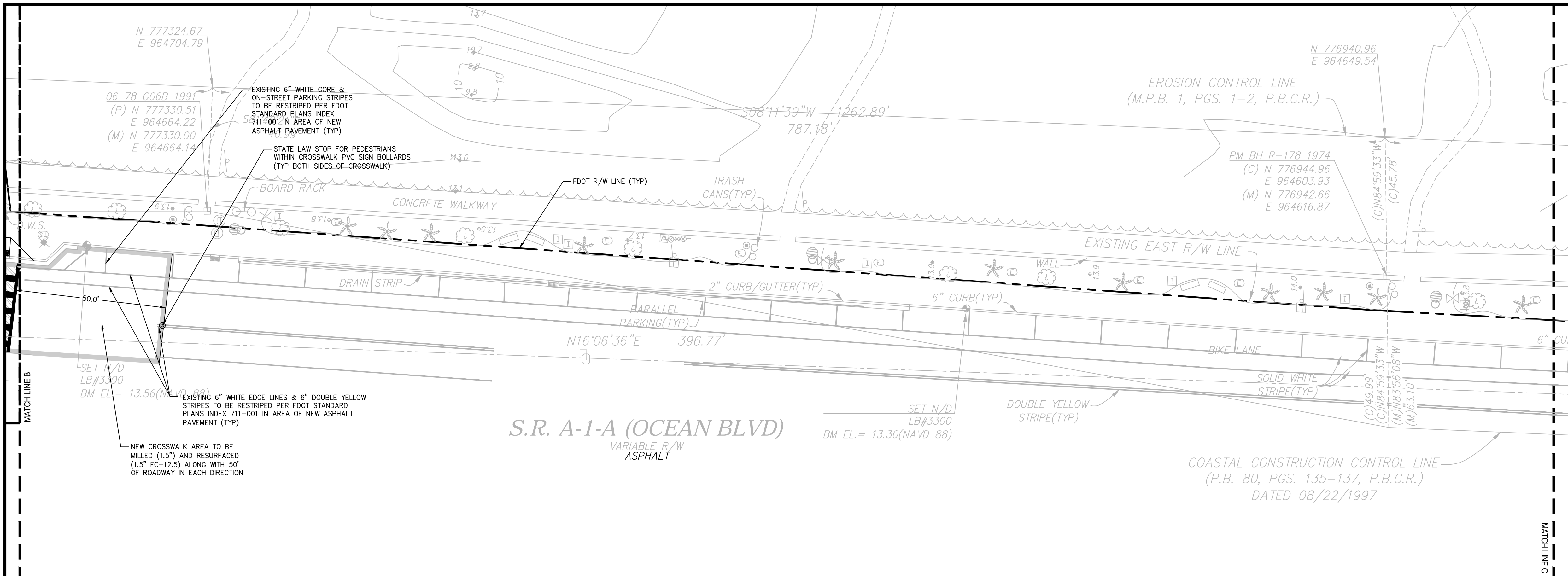
ENGINEERING PLAN

PROJECT NO.
15-008(2)

SHEET NO.

C-101

FILE ID.



CITY of DELRAY BEACH

ENVIRONMENTAL SERVICES DEPARTMENT

434 SOUTH SWINTON AVENUE, DELRAY BEACH, FLORIDA 33444

Phone: (561) 243-7322 Fax: (561) 243-7060 www.mydelraybeach.com

LANDSCAPE ARCHITECT

EDSA, INC.

1512 E. BROWARD BOULEVARD
SUITE 110
FORT LAUDERDALE, FLORIDA 33301

ENVIRONMENTAL ENGINEER

OCEAN CONSULTING

340 MINORCA AVENUE
SUITE 5
CORAL GABLES, FLORIDA 33134

SURVEY

AVIROM & ASSOCIATES

50 S.W. 2ND AVENUE
SUITE 102
BOCA RATON, FLORIDA 33432

SEAL

DESIGNED BY					
DRAWN BY					
CHECKED BY					
DATE	JANUARY 2019	REVISION	DATE	DESCRIPTION	BY

BEACH MASTER PLAN - PH 2

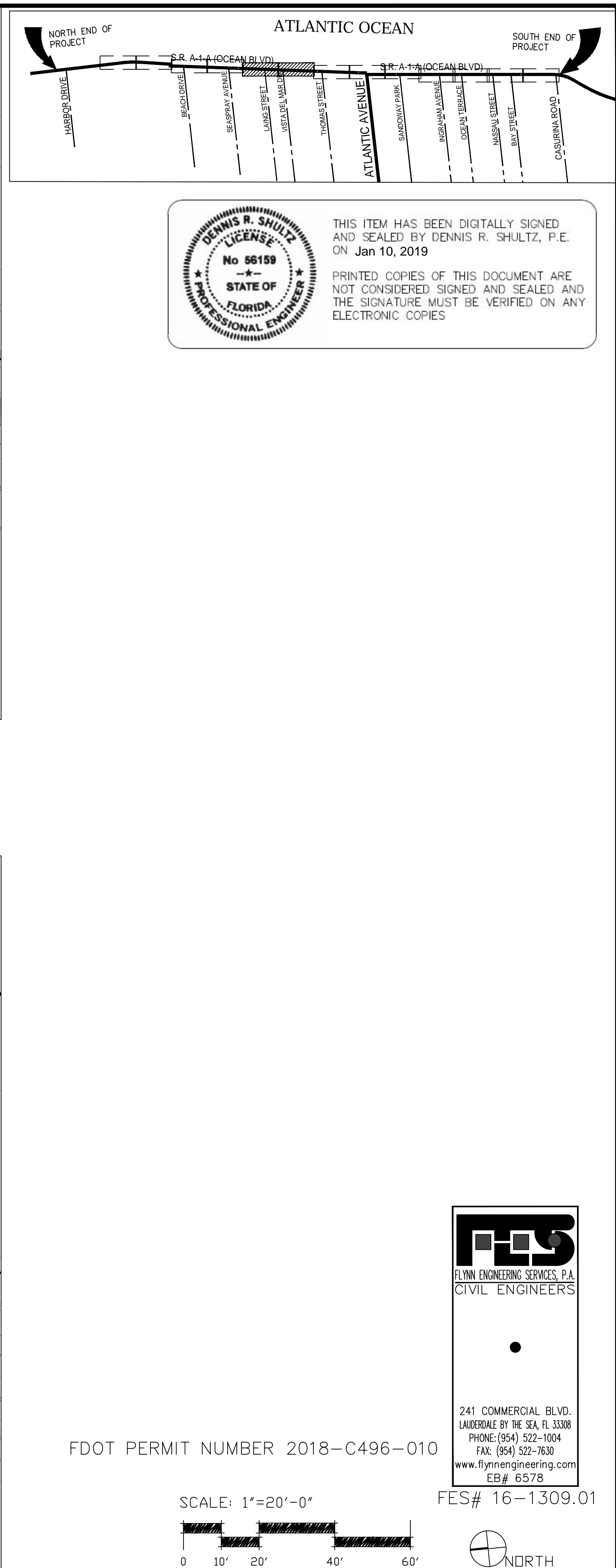
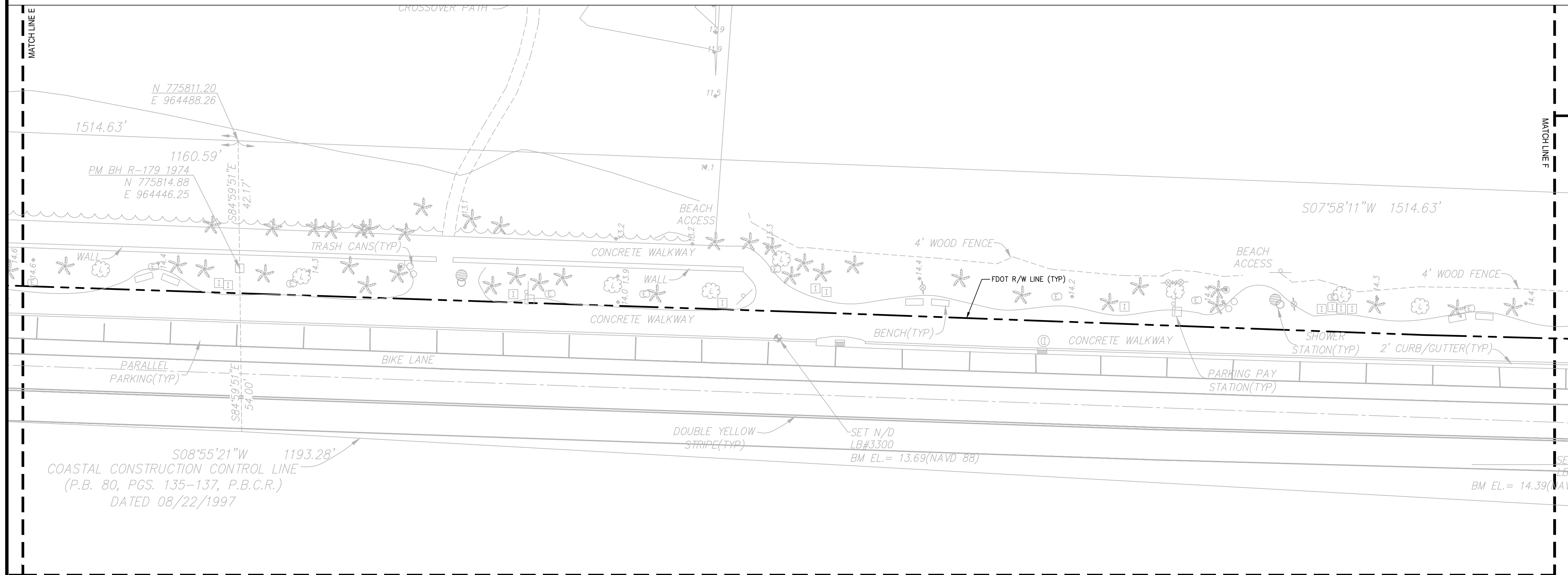
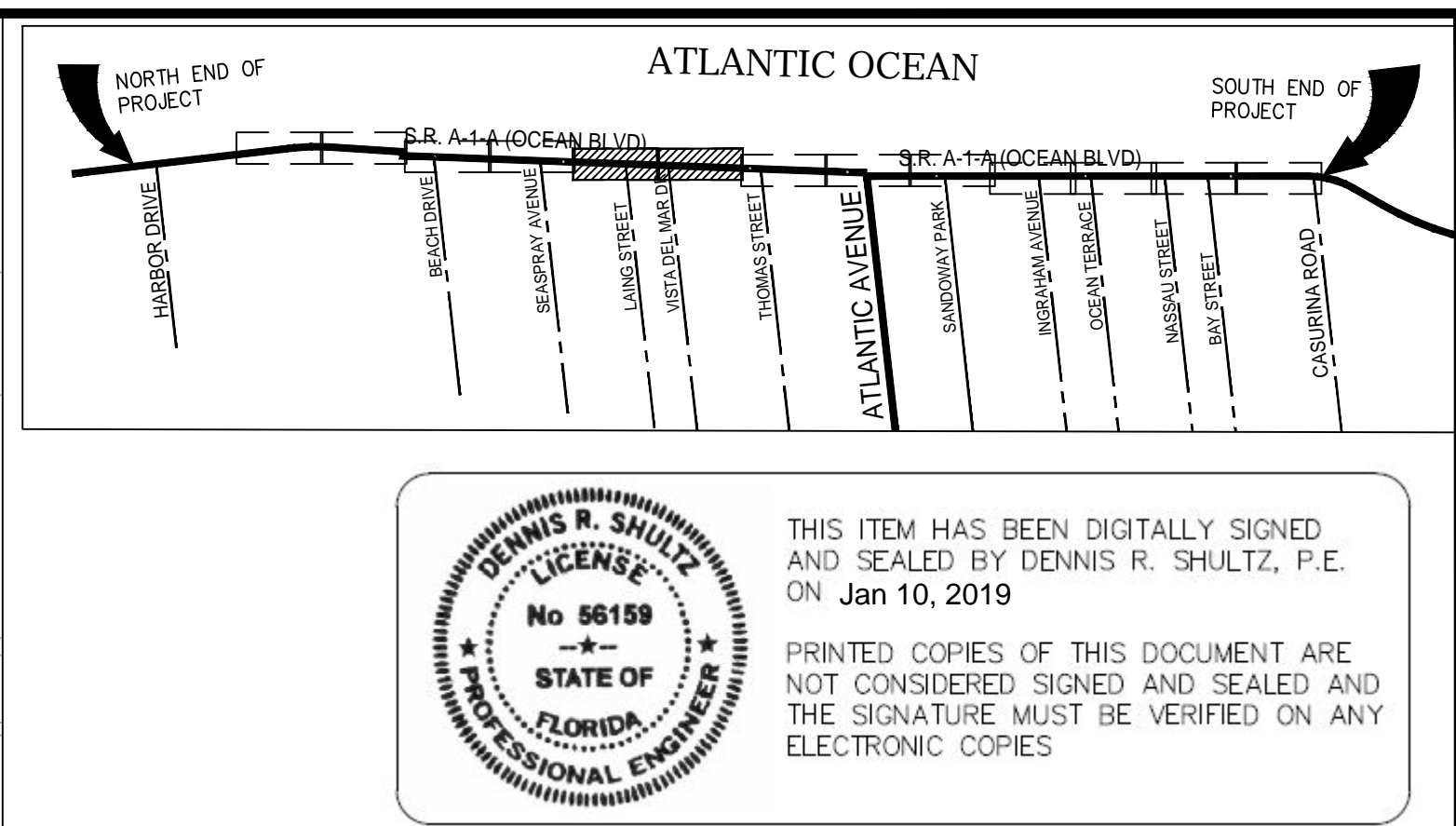
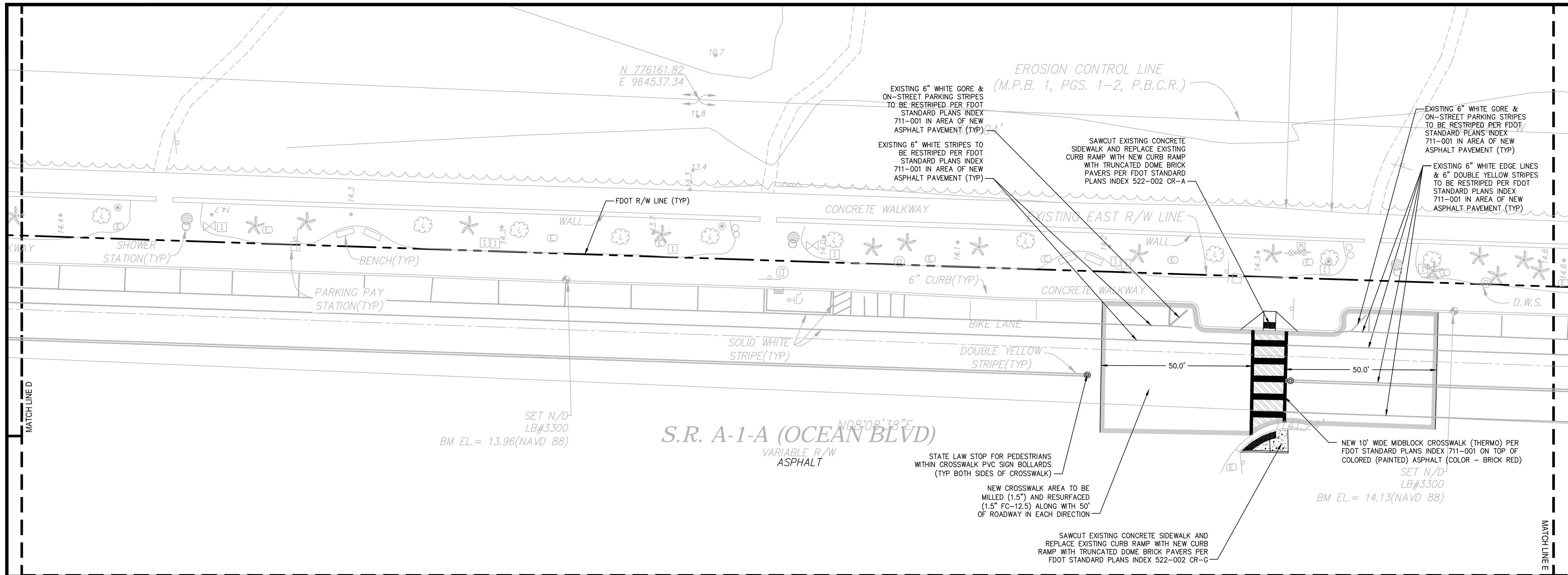
ISSUED FOR BID

ENGINEERING PLAN

PROJECT NO. 15-008(2)

SHEET NO. C-102

FILE ID.





CITY of DELRAY BEACH

ENVIRONMENTAL SERVICES DEPARTMENT

434 SOUTH SWINTON AVENUE, DELRAY BEACH, FLORIDA 33444

Phone: (561) 243-7322 Fax: (561) 243-7060 www.mydelraybeach.com

LANDSCAPE ARCHITECT

EDSA, INC.

1512 E. BROWARD BOULEVARD

SUITE 110

FORT LAUDERDALE, FLORIDA 33301

CIVIL ENGINEER

FLYNN ENGINEERING

241 COMMERCIAL BOULEVARD

LAUDERDALE BY THE SEA, FLORIDA 33308

ENVIRONMENTAL ENGINEER

OCEAN CONSULTING

340 MINORCA AVENUE

SUITE 5

CORAL GABLES, FLORIDA 33134

SURVEY

AVIROM & ASSOCIATES

50 S.W. 2ND AVENUE

SUITE 102

BOCA RATON, FLORIDA 33432

SEAL

DESIGNED BY					
DRAWN BY					
CHECKED BY					
DATE	JANUARY 2019	REVISION	DATE	DESCRIPTION	BY

BEACH MASTER PLAN - PH 2

ISSUED FOR BID

ENGINEERING PLAN

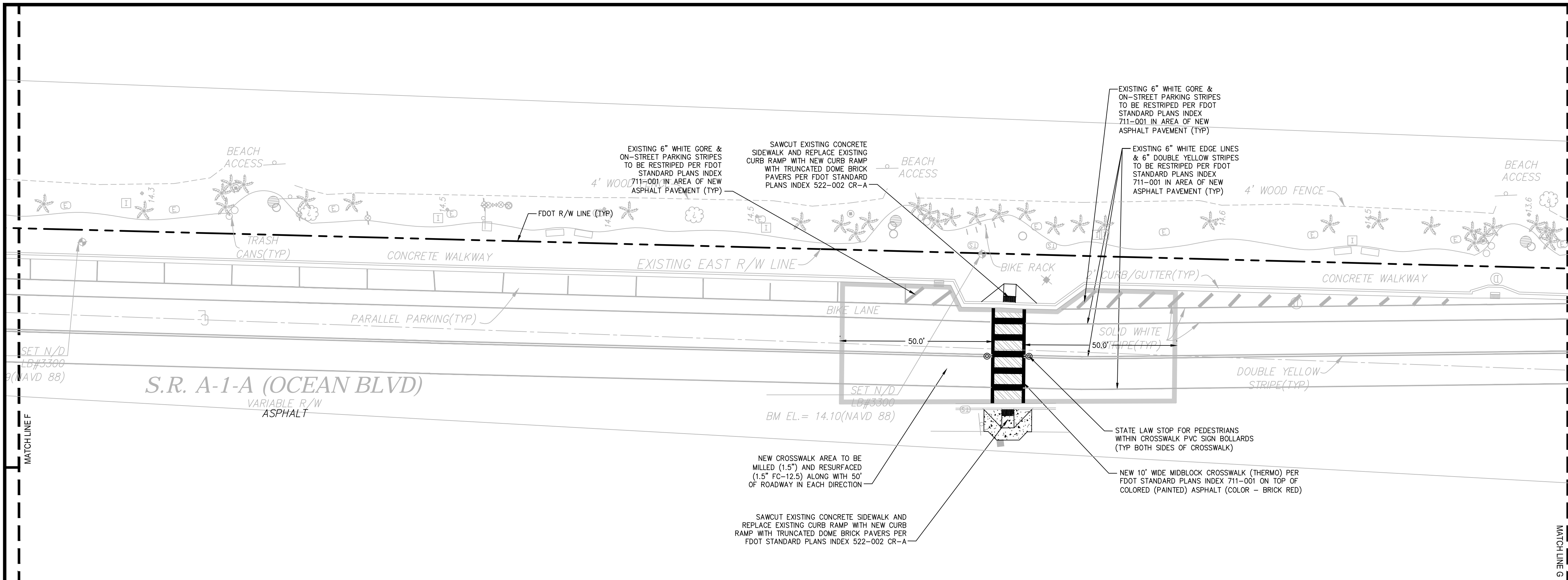
PROJECT NO.

15-008(2)

SHEET NO.

C-103

FILE ID.



ATLANTIC OCEAN

NORTH END OF PROJECT

SOUTH END OF PROJECT

R.A-1-A (OCEAN BLVD)

R.A-1-A (OCEAN BLVD)

ATLANTIC AVENUE

SANDWICH PARK

INGRAM AVENUE

OCEAN TERRACE

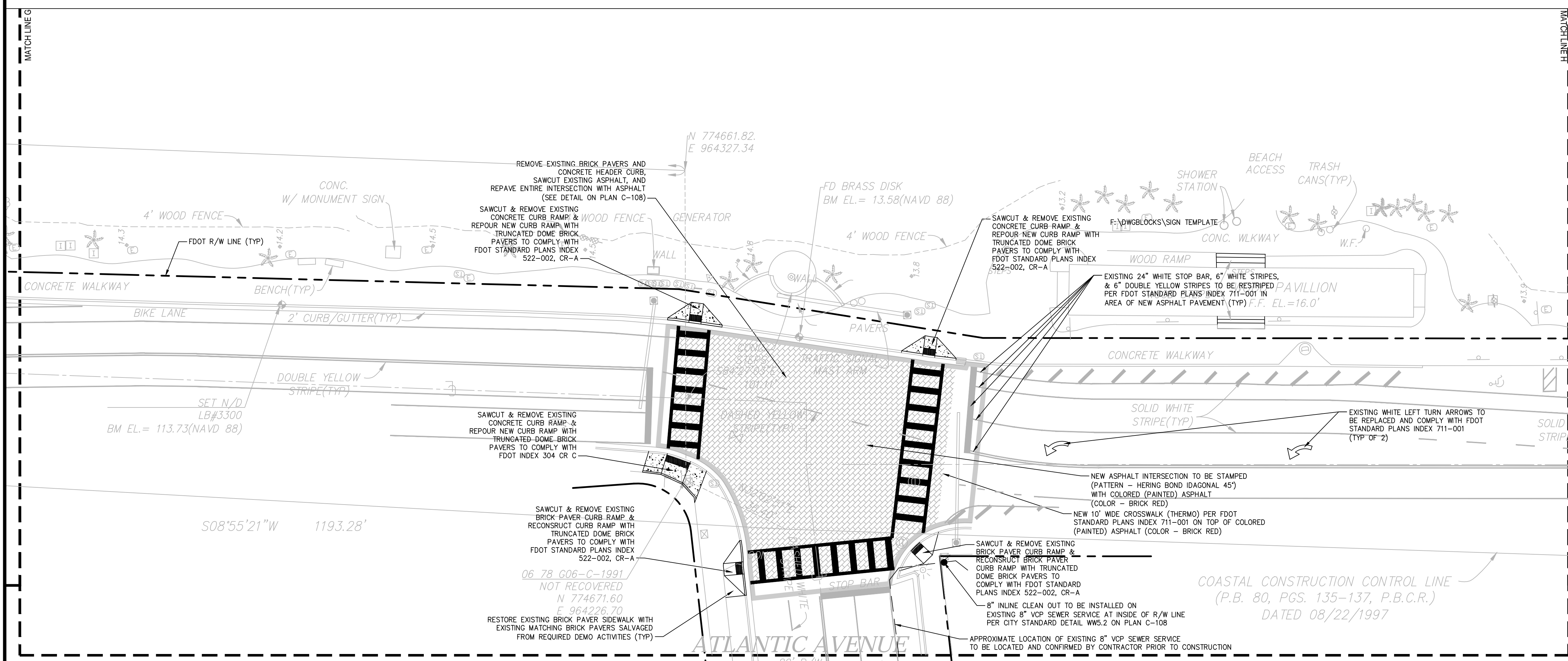
NASHUA STREET

BAY STREET

CASUARINA ROAD

THIS ITEM HAS BEEN DIGITALLY SIGNED AND SEALED BY DENNIS R. SHULTZ, P.E. ON Jan 10, 2019

PRINTED COPIES OF THIS DOCUMENT ARE NOT CONSIDERED SIGNED AND SEALED AND THE SIGNATURE MUST BE VERIFIED ON ANY ELECTRONIC COPIES



ATLANTIC AVENUE

S08°55'21\"/>

CITY of DELRAY BEACH
ENVIRONMENTAL SERVICES DEPARTMENT
434 SOUTH SWINTON AVENUE, DELRAY BEACH, FLORIDA 33444
Phone: (561) 243-7322 Fax: (561) 243-7060 www.mydelraybeach.com

DESIGNED BY: []
DRAWN BY: []
CHECKED BY: []
DATE: JANUARY 2019

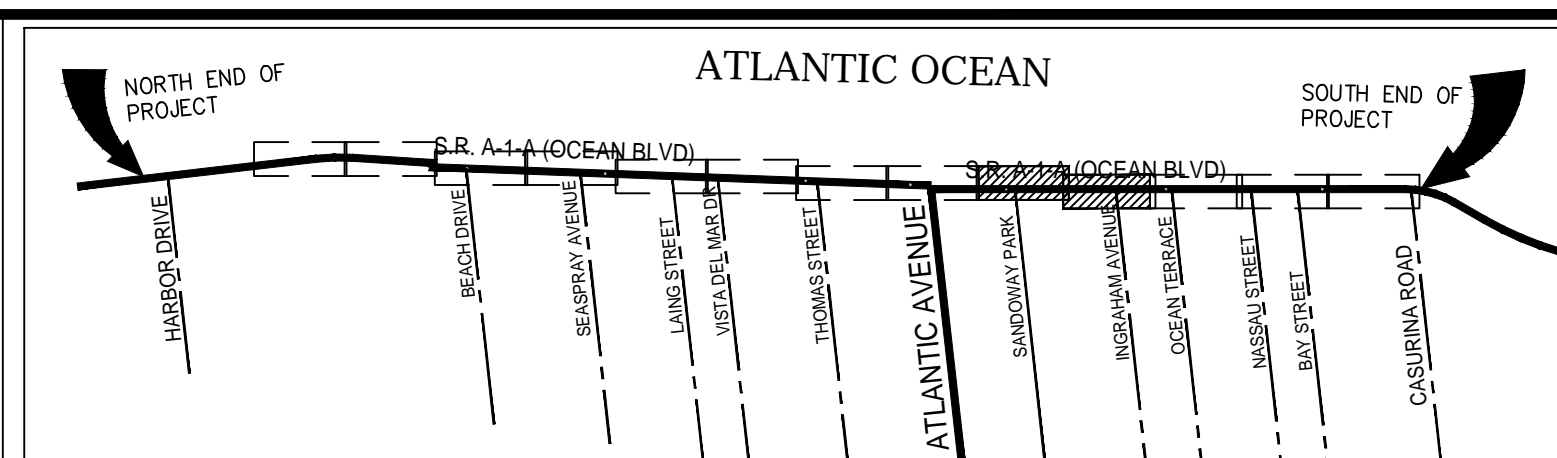
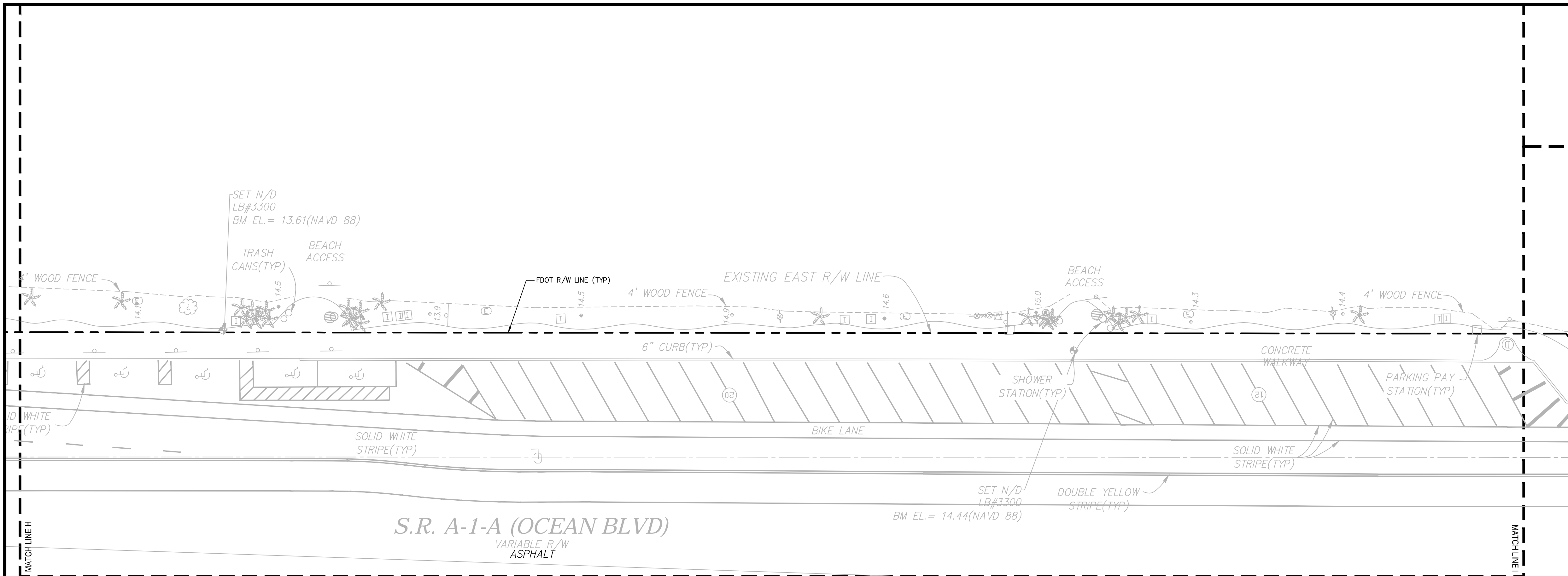
BEACH MASTER PLAN - PH 2
ISSUED FOR BID

ENGINEERING PLAN

PROJECT NO.
15-008(2)

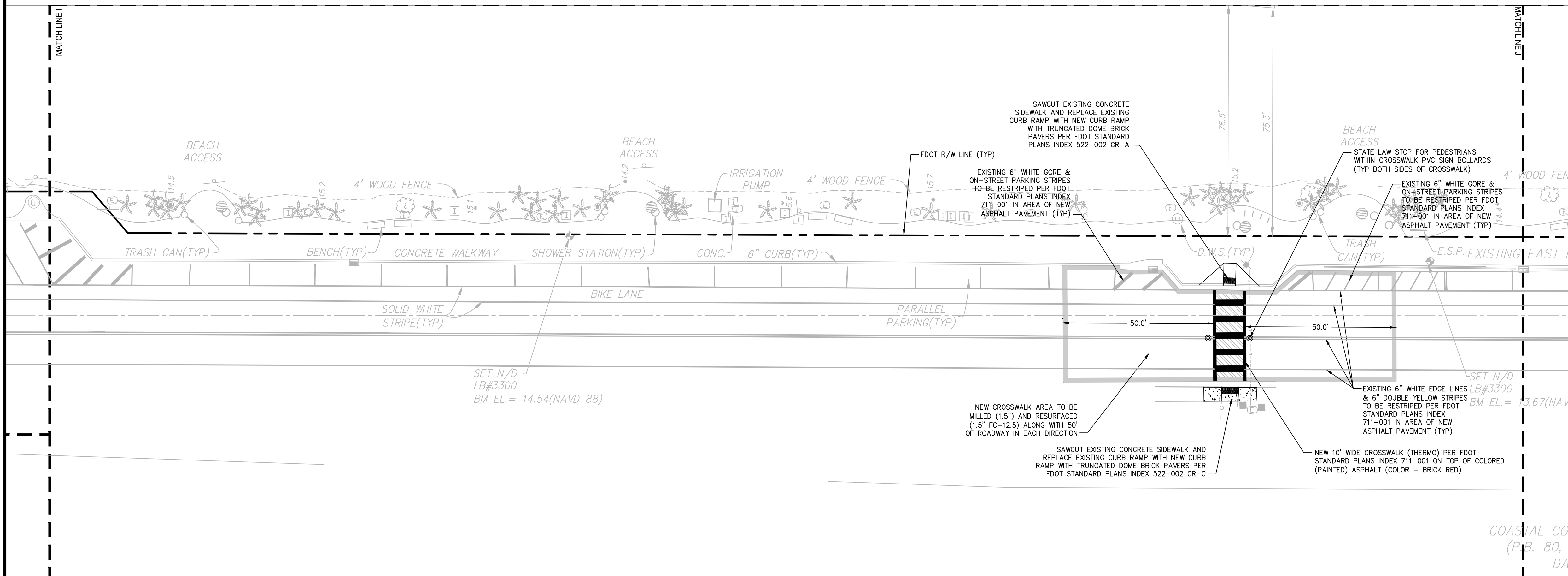
SHEET NO.
C-104

FILE ID.



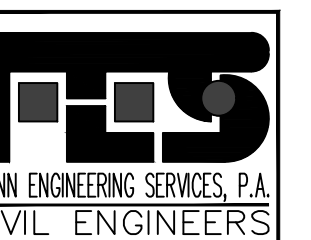
THIS ITEM HAS BEEN DIGITALLY SIGNED AND SEALED BY DENNIS R. SHULTZ, P.E. ON Jan 10, 2019

PRINTED COPIES OF THIS DOCUMENT ARE NOT CONSIDERED SIGNED AND SEALED AND THE SIGNATURE MUST BE VERIFIED ON ANY ELECTRONIC COPIES



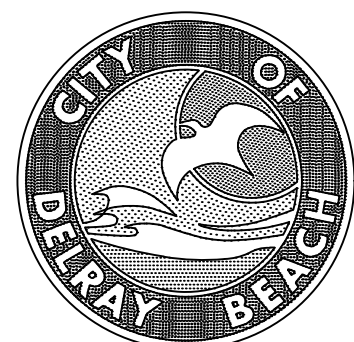
FDOT PERMIT NUMBER 2018-C496-010

SCALE: 1"=20'-0"



241 COMMERCIAL BLVD.
LAUDERDALE BY THE SEA, FL 33308
PHONE: (954) 522-1004
FAX: (954) 522-7630
www.flynnengineering.com
EB# 6578

FES# 16-1309.01



CITY of DELRAY BEACH
ENVIRONMENTAL SERVICES DEPARTMENT
434 SOUTH SWINTON AVENUE, DELRAY BEACH, FLORIDA 33444
Phone: (561) 243-7322 Fax: (561) 243-7060 www.mydelraybeach.com

LANDSCAPE ARCHITECT
EDSA, INC.
1512 E. BROWARD BOULEVARD
SUITE 110
FORT LAUDERDALE, FLORIDA 33301

ENVIRONMENTAL ENGINEER
OCEAN CONSULTING
340 MINORCA AVENUE
SUITE 6
CORAL GABLES, FLORIDA 33134

SURVEY
AVIROM & ASSOCIATES
50 S.W. 2ND AVENUE
SUITE 102
BOCA RATON, FLORIDA 33432

MECHANICAL, ELECTRICAL, AND PLUMBING
CREDO CONSULTING ENGINEERS
800 E. BROWARD BOULEVARD
SUITE 601
FORT LAUDERDALE, FLORIDA 33301

SEAL

DESIGNED BY
DRAWN BY
CHECKED BY

DATE JANUARY 2019

REVISION

DATE

DESCRIPTION

BEACH MASTER PLAN - PH 2
ISSUED FOR BID

ENGINEERING PLAN

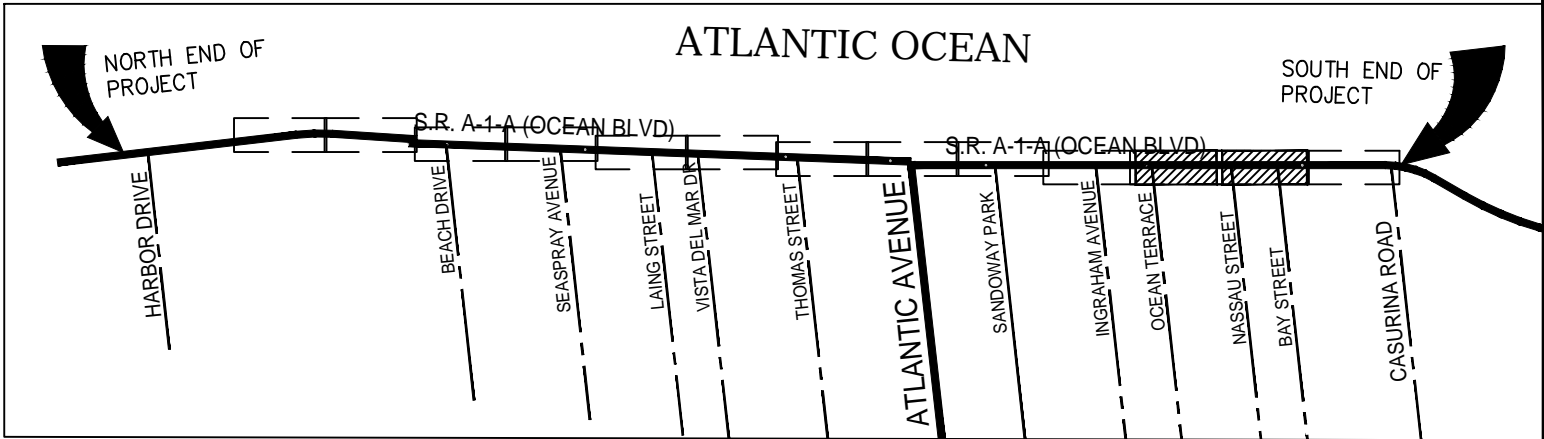
PROJECT NO.
15-008(2)

SHEET NO.

C-105

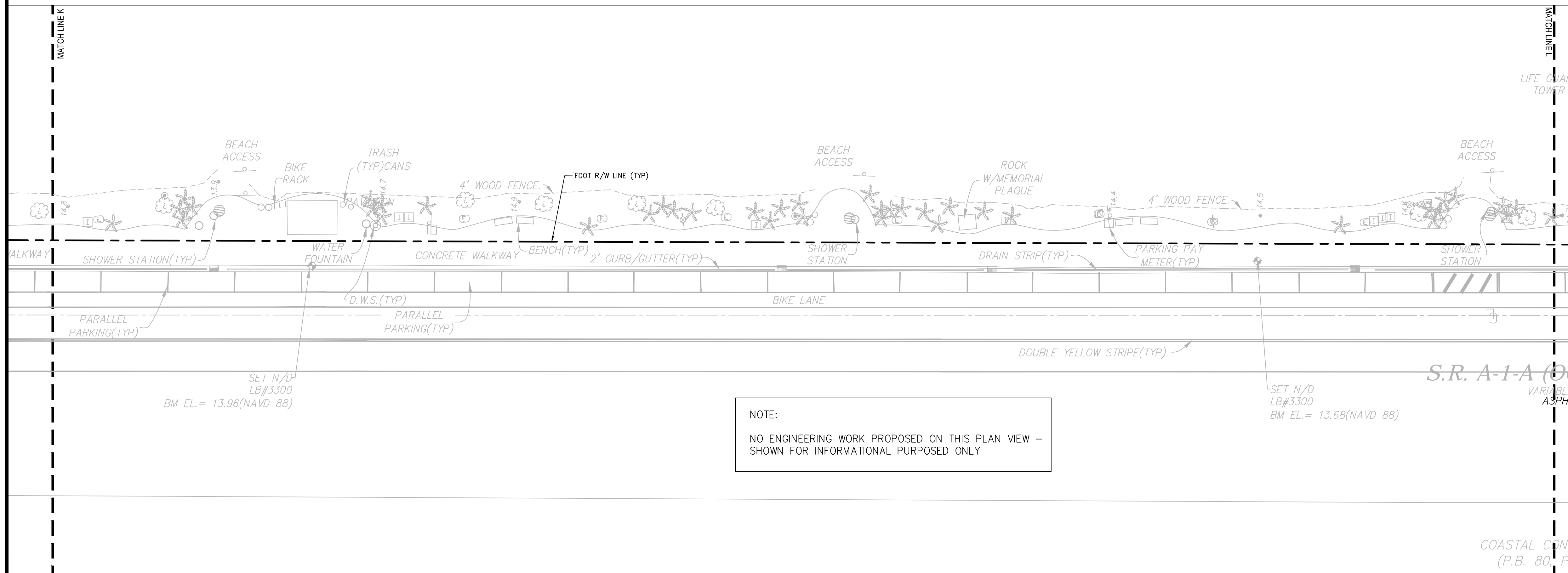
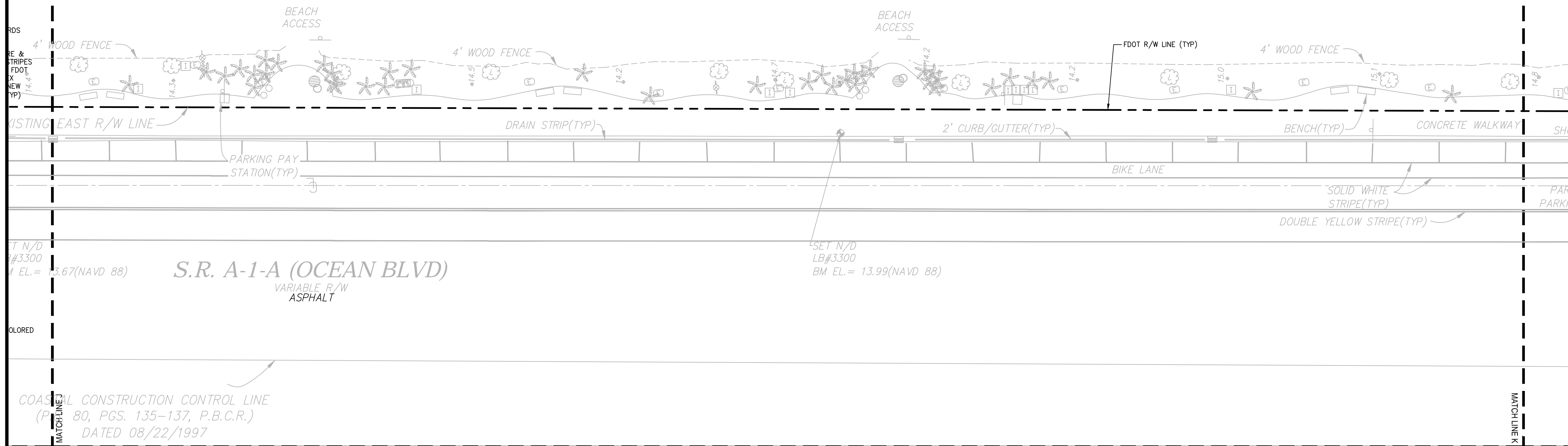
FILE ID.

NOTE:
NO ENGINEERING WORK PROPOSED ON THIS PLAN VIEW -
SHOWN FOR INFORMATIONAL PURPOSES ONLY



THIS ITEM HAS BEEN DIGITALLY SIGNED
AND SEALED BY DENNIS R. SHULTZ, P.E.
ON Jan 10, 2019

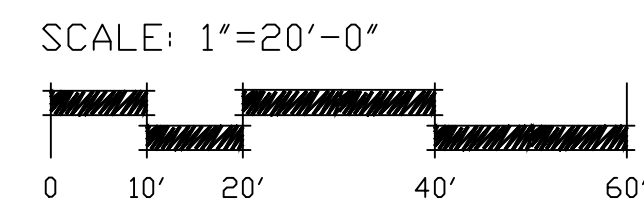
PRINTED COPIES OF THIS DOCUMENT ARE
NOT CONSIDERED SIGNED AND SEALED AND
THE SIGNATURE MUST BE VERIFIED ON ANY
ELECTRONIC COPIES



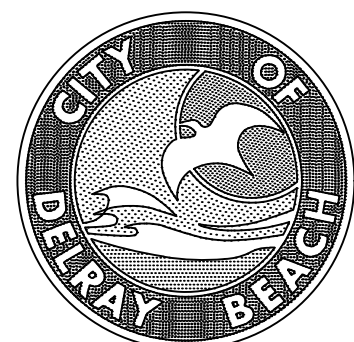
FLYNN ENGINEERING SERVICES, P.A.
CIVIL ENGINEERS

241 COMMERCIAL BLVD.
LAUDERDALE BY THE SEA, FL 33308
PHONE: (954) 522-1004
FAX: (954) 522-7630
www.flynnengineering.com
EB# 6578

FDOT PERMIT NUMBER 2018-C496-010



FES# 16-1309.01



CITY of DELRAY BEACH
ENVIRONMENTAL SERVICES DEPARTMENT
434 SOUTH SWINTON AVENUE, DELRAY BEACH, FLORIDA 33444
Phone: (561) 243-7322 Fax: (561) 243-7060 www.mydelraybeach.com

LANDSCAPE ARCHITECT
EDSA, INC.
1512 E. BROWARD BOULEVARD
SUITE 110
FORT LAUDERDALE, FLORIDA 33301

ENVIRONMENTAL ENGINEER
OCEAN CONSULTING
340 MINORCA AVENUE
SUITE 6
CORAL GABLES, FLORIDA 33134

SURVEY
AVIROM & ASSOCIATES
50 S.W. 2ND AVENUE
SUITE 102
BOCA RATON, FLORIDA 33432

SEAL

DESIGNED BY	
DRAWN BY	
CHECKED BY	
DATE	JANUARY 2019

REVISION	DATE	DESCRIPTION	BY

BEACH MASTER PLAN - PH 2
ISSUED FOR BID



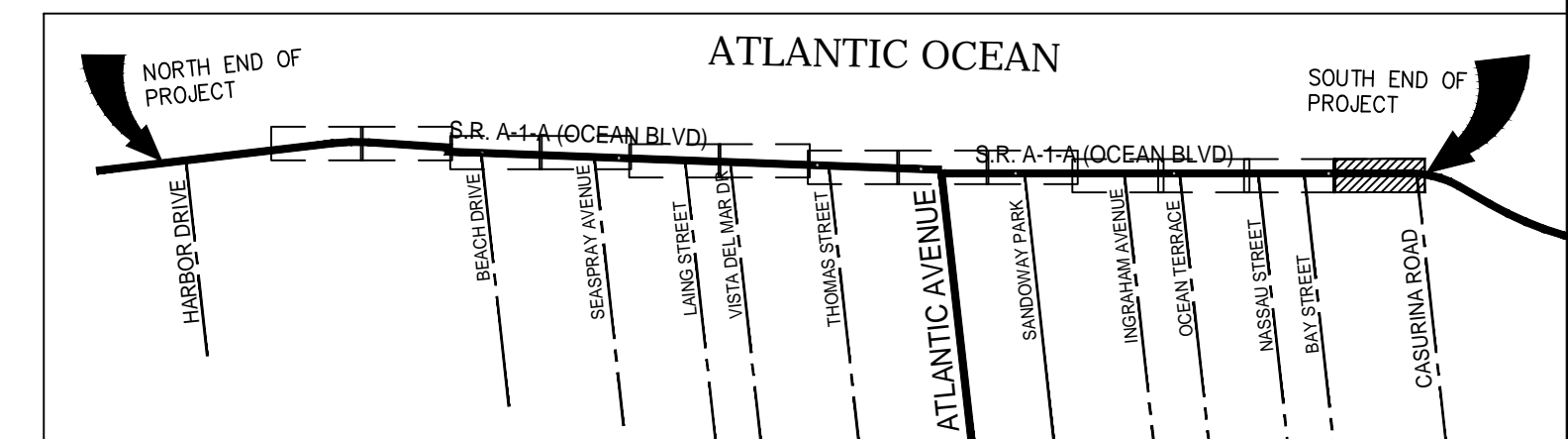
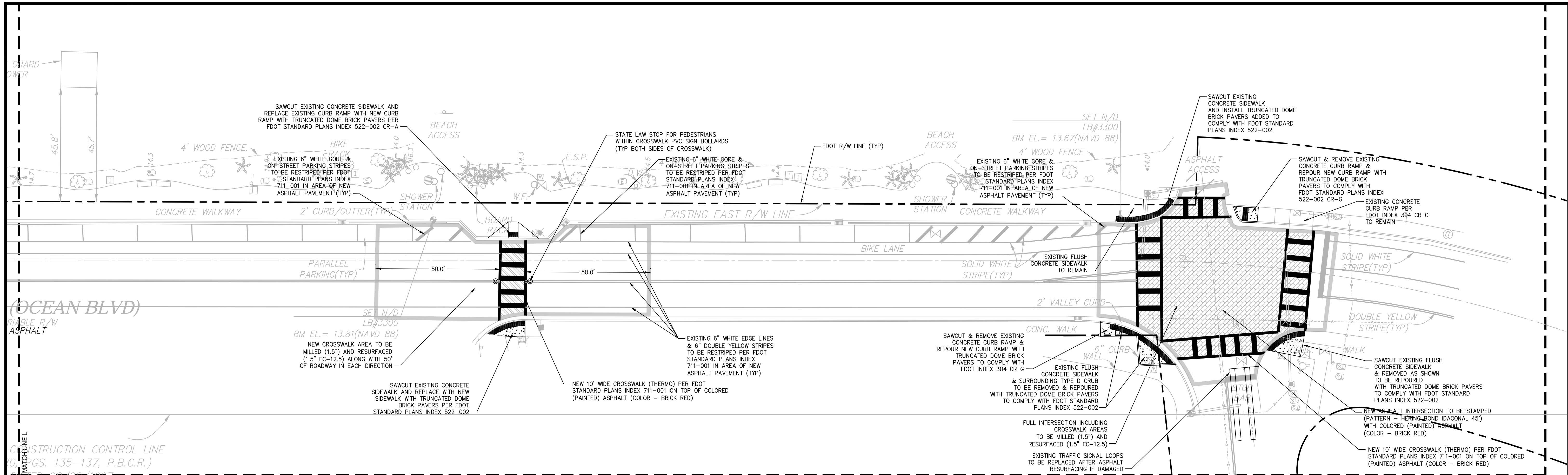
ENGINEERING PLAN

PROJECT NO.
15-008(2)

SHEET NO.

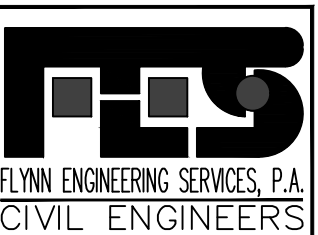
C-106

FILE ID.



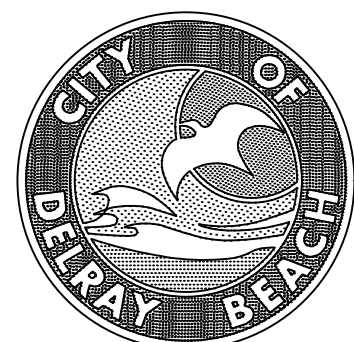
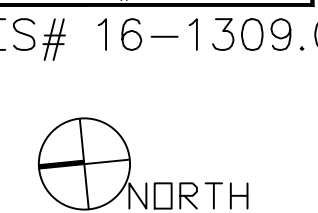
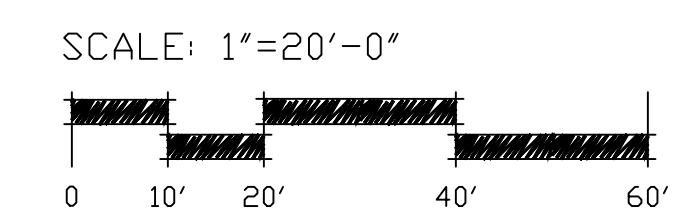
THIS ITEM HAS BEEN DIGITALLY SIGNED AND SEALED BY DENNIS R. SHULTZ, P.E. ON Jan 10, 2019

PRINTED COPIES OF THIS DOCUMENT ARE NOT CONSIDERED SIGNED AND SEALED AND THE SIGNATURE MUST BE VERIFIED ON ANY ELECTRONIC COPIES



241 COMMERCIAL BLVD.
LAUDERDALE BY THE SEA, FL 33308
PHONE: (954) 522-1004
FAX: (954) 522-7630
www.flynnengineering.com
EB# 6578

FDOT PERMIT NUMBER 2018-C496-010



CITY of DELRAY BEACH
ENVIRONMENTAL SERVICES DEPARTMENT
434 SOUTH SWINTON AVENUE, DELRAY BEACH, FLORIDA 33444
Phone: (561) 243-7322 Fax: (561) 243-7060 www.mydelraybeach.com

LANDSCAPE ARCHITECT
EDSA, INC.
1512 E. BROWARD BOULEVARD
SUITE 110
FORT LAUDERDALE, FLORIDA 33301

ENVIRONMENTAL ENGINEER
OCEAN CONSULTING
340 MINORCA AVENUE
SUITE 6
CORAL GABLES, FLORIDA 33134

SURVEY
AVIROM & ASSOCIATES
50 S.W. 2ND AVENUE
SUITE 102
BOCA RATON, FLORIDA 33432

SEAL

DESIGNED BY	
DRAWN BY	
CHECKED BY	
DATE	JANUARY 2019

REVISION	DATE	DESCRIPTION	BY

BEACH MASTER PLAN - PH 2
ISSUED FOR BID



ENGINEERING PLAN

PROJECT NO.
15-008(2)
SHEET NO.
C-107
FILE ID.

F.D.O.T. NOTES:

- ALL MATERIALS AND CONSTRUCTION WITHIN THE FDOT RIGHT-OF-WAY SHALL CONFORM TO THE FDOT ROADWAY AND TRAFFIC DESIGN STANDARDS (LATEST EDITION), STANDARD SPECIFICATIONS (LATEST EDITION) AND THE SUPPLEMENTS THERETO.
- THE APPLICANT'S ENGINEER RESPONSIBLE FOR CONSTRUCTION INSPECTION SHALL INSURE THAT THE MAINTENANCE OF TRAFFIC PLAN (MOT) FOR THE PROJECT IS IN ACCORDANCE WITH THE APPLICABLE FDOT STANDARD PLANS INDEX NUMBERS (102-600) AND THESE DOCUMENTS: THE MANUAL ON UNIFORM TRAFFIC CONTROL DEVICES FOR STREETS AND HIGHWAYS (U.S. DEPARTMENT OF TRANSPORTATION, FHWA).
- AT THE END OF EACH WORK PERIOD, ANY DROP-OFF IN THE AREA ADJACENT TO THE TRAVEL WAY OF THE STATE ROAD SHALL BE BACKFILLED IN ACCORDANCE WITH FDOT STANDARD PLANS INDEX 102-600 OR SHALL BE OTHERWISE PROTECTED WITH TEMPORARY BARRIER WALL AT THE CONTRACTOR'S EXPENSE.
- IF THE PERMITTED WORK IS ON A ROADWAY THAT HAS BEEN SELECTED AS A HURRICANE OR DISASTER EVACUATION ROUTE, THE APPLICANT, AT THE PRE-CONSTRUCTION CONFERENCE IS REQUIRED TO PRESENT, AS PART OF THE WORK PLAN, AN EMERGENCY FUNCTIONAL RESTORATION PLAN TO ADDRESS EVENTUALITIES SUCH AS HURRICANES.
- THE CONTRACTOR MUST CALL THE APPROPRIATE COUNTY TRAFFIC ENGINEERING DIVISION, HAVING JURISDICTION OVER THE PROJECT AT LEAST 48 HOURS, BEFORE ANY EXCAVATION WITHIN THE FDOT RIGHT-OF-WAY TO DETERMINE THE LOCATION OF THE EXISTING TRAFFIC SIGNAL INTERCONNECT CABLE.
- THE LOCATION OF EXISTING UTILITIES SHOWN ARE APPROXIMATE ONLY. THE EXACT LOCATION SHALL BE DETERMINED BY THE CONTRACTOR DURING CONSTRUCTION. RELOCATION OF UTILITIES SHALL BE COORDINATED WITH UTILITY COMPANIES AFTER IDENTIFICATION OF CONFLICT BY CONTRACTOR. CONTRACTOR WILL NOTIFY ENGINEER IN ADVANCE BEFORE ANY RELOCATION.
- BEFORE PERMIT APPROVAL AND CONSTRUCTION OF THIS PROJECT, THE APPLICANT MUST CONTACT THE FLORIDA DEPARTMENT OF TRANSPORTATION LOCAL MAINTENANCE OFFICE TO SCHEDULE A PRE-CONSTRUCTION MEETING.
- THE APPLICANT AT THE EARLIEST CONVENIENT TIME SHALL NOTIFY IN WRITING ALL RIGHT-OF-WAY USERS AFFECTED BY THE CONSTRUCTION OF THIS PROJECT.
- ALL MOT LANE CLOSURE SIGNS SHALL BE COVERED WHEN LANES ARE NOT CLOSED. NO LANES ARE TO BE CLOSED EXCEPT AT TIMES PRESCRIBED BY THE DEPARTMENT.
- LIMEROCK BASE SHALL BE A MINIMUM OF 15" AND COMPACTED IN 6" LIFTS TO 98% MAXIMUM DENSITY ACCORDING TO AASHTO-T180. CONSTRUCTION TO CONFORM TO SECTION 200. BASE TO BE PRIMED AFTER COMPACTION.
- STABILIZED SUBGRADE - MINIMUM 12" THICK AND COMPACTED TO 98% MAXIMUM DENSITY ACCORDING TO AASHTO-T180. MATERIAL TO HAVE MINIMUM L.B.R. OF 40 AND CONFORM TO SECTION 160.
- REMOVE ALL MUCK, OVERBURDEN, AND ROOT MATERIAL TO THE RIGHT-OF-WAY LINE, AND BACKFILL TO THE REQUIRED SUBGRADE WITH CLEAN, GRANULAR MATERIAL IN MAXIMUM 6" LIFTS COMPACTED TO 100% OF MAXIMUM DENSITY IN ACCORDANCE WITH AASHTO T99-C SPECIFICATIONS, AND EACH LIFT TESTED BEFORE PLACING NEXT LIFT.
- ALL CURB RAMPS MUST FACE IN THE DIRECTION OF PEDESTRIAN TRAVEL.
- FLAGGERS MUST BE PRESENT DURING THE INGRESS AND EGRESS OF CONSTRUCTION VEHICLES TO AND FROM THE PROJECT SITE. WARNING SIGNS MUST BE ERECTED ADVISING MOTORISTS OF TRUCKS ENTERING THE HIGHWAY.
- THE LOCAL MEDIA SHALL BE CONTACTED A WEEK PRIOR TO ANY LANE CLOSURES ON THE STATE ROAD SYSTEM AS IT WILL OCCUR DURING PEAK HOURS OR OVER THE SPAN OF MORE THAN ONE DAY. CONTACT BARBARA KELLEHER, FDOT PUBLIC INFORMATION OFFICE AT 954-777-4090 FOR GUIDANCE ON WHO TO CONTACT. PROVIDE COPY OF THE PRESS RELEASE TO:

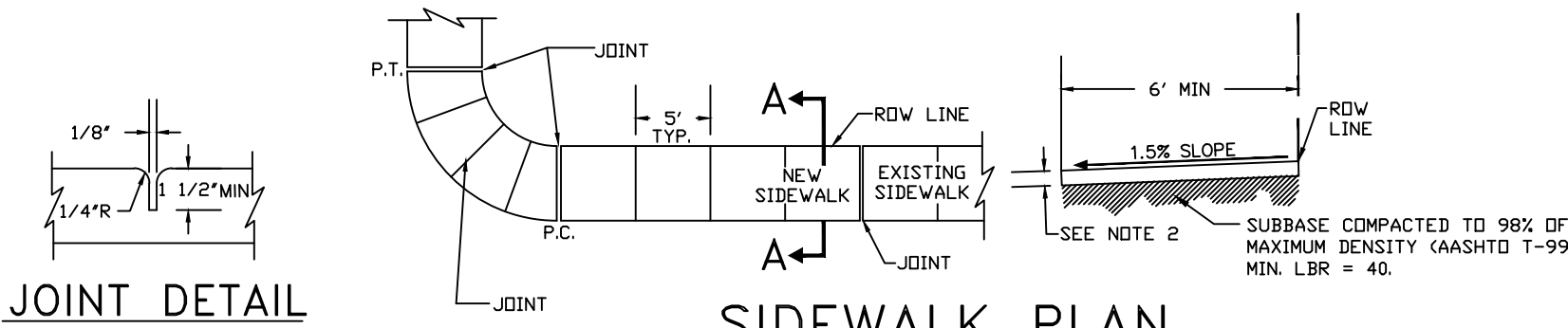
FLORIDA DEPARTMENT OF TRANSPORTATION
PUBLIC INFORMATION OFFICE
3400 WEST COMMERCIAL BLVD.
FORT LAUDERDALE, FLORIDA 33309

- PATTERNED PAVEMENT INSTALLATION SHALL COMPLY WITH CURRENT FDOT STANDARD SPECIFICATION 523. ONLINE REFERENCE:
<http://www.fdot.gov/programmanagement/implemented/SpecBooks/January2019/Files/119eBook.pdf>
- ARCHITECTURAL PAVERS INSTALLATION FOR SIDEWALKS AND/OR DRIVEWAYS WITHIN FDOT RIGHT OF WAY SHALL COMPLY WITH CURRENT FDOT STANDARD SPECIFICATION 526. ONLINE REFERENCE:
<http://www.fdot.gov/programmanagement/implemented/SpecBooks/January2019/Files/119eBook.pdf>
- OWNERSHIP OF ALL SUITABLE EXCAVATED MATERIALS, AS DETERMINED BY THE DEPARTMENT, SHALL REMAIN IN THE DEPARTMENT UNTIL A FINAL ACCEPTANCE OF THE PERMITTED PROJECT IS FULFILLED. EXCAVATED MATERIALS SHALL BE HAULED BY THE PERMITEE, AT THEIR COST AND EXPENSE FROM THE SITE TO THE PALM BEACH OPERATIONS CENTER OR STOCKPILED IN THOSE AREAS AS DIRECTED BY THE DEPARTMENT, INCLUDING ASPHALT MILLINGS.

F.D.O.T. SUPPLEMENTAL NOTES:

- ALL MAINTENANCE OF TRAFFIC M.O.T. FOR THIS PROJECT WILL BE IN COMPLIANCE WITH THE DEPARTMENT'S CURRENT EDITION OF FDOT STANDARD PLANS FOR ROAD AND BRIDGE CONSTRUCTION INDICES, (102-600 SERIES) AND THE LATEST EDITION OF THE MANUAL ON UNIFORM TRAFFIC CONTROL DEVICES (MUTCD). THE OPERATIONS ENGINEER OR HIS DESIGNEE RESERVES THE RIGHT TO DIRECT THE REMOVAL/RELOCATION/MODIFICATION OF ANY TRAFFIC DEVICE(S) AT THE PERMITEE'S SOLE EXPENSE. SPECIAL ATTENTION WILL BE GIVEN TO FDOT STANDARD PLANS INDICES 102-600, AND 102-601 THRU 605.
- IT IS THE PERMITEE'S RESPONSIBILITY TO OBTAIN FINAL ACCEPTANCE OF THE PERMITTED WORK (COMPLETED) AND THE RESTORATION OF THE RIGHT-OF-WAY FROM THE FDOT PRIOR TO USAGE.
- PERMITEE WILL PROVIDE NECESSARY DENSITIES IN ACCORDANCE WITH SECTION 125-8 OF THE FDOT STANDARD SPECIFICATIONS FOR ROAD & BRIDGE CONSTRUCTION (LATEST EDITION) PRIOR TO FINAL ACCEPTANCE BY THE FDOT.
- PERMITEE WILL RESTORE THE RIGHT-OF-WAY AS A MINIMUM, TO ITS ORIGINAL CONDITION OR BETTER IN ACCORDANCE WITH FDOT'S LATEST STANDARD SPECIFICATIONS FOR ROAD & BRIDGE CONSTRUCTION OR AS DIRECTED BY THE RESIDENT OPERATIONS ENGINEER.
- DURING REMOVAL / INSTALLATION OF ANY CURB AND GUTTER SECTION, THE PERMITEE WILL BE RESPONSIBLE FOR ANY DAMAGE DONE TO THE ABUTTING ASPHALT. THE DAMAGED ASPHALT REPAIR WILL BE IN ACCORDANCE WITH THE CURRENT SPECIFICATIONS AND / OR AS DIRECTED BY THE RESIDENT OPERATIONS ENGINEER.
- PERMITEE WILL PROVIDE THE PRODUCERS CERTIFICATION (DELIVERY TICKET) FOR THE NS CONCRETE - 2500 PSI (USED FOR SIDEWALK, CURB & GUTTER, DITCH PAVEMENT AND TRAFFIC SEPARATOR) PRIOR TO FINAL ACCEPTANCE BY THE DEPARTMENT. THE DELIVERY TICKET SHALL CERTIFY THE CONCRETE WAS BATCHED, DELIVERED, AND PLACED IN ACCORDANCE WITH SECTION 347 OF THE FDOT'S STANDARD SPECIFICATIONS FOR ROAD AND BRIDGE CONSTRUCTION (CURRENT EDITION).
- PERMITEE WILL PROVIDE THE PRODUCER'S CERTIFICATION FOR THE PRECAST COLLAR, SUPPORT SLAB, INLET GRATING PIPE, AND CLASS 1 CONCRETE, ETC. PRIOR TO FINAL ACCEPTANCE BY FDOT. THE CERTIFICATION MUST BEAR THE ORIGINAL SIGNATURE OF A LEGALLY RESPONSIBLE PERSON FROM THE PRODUCER AND IS PROVIDED ON THE PRODUCER'S LETTERHEAD.
- REMOVAL / INSTALLATION OF SIDEWALK WILL BE IN ACCORDANCE WITH FDOT STANDARD PLANS INDEX 522-002.
- SODDED AREAS WILL BE IN ACCORDANCE WITH DESIGN STANDARDS INDEX 105 AND SECTIONS 162, 981, 982, 983, 987 OF THE FDOT'S STANDARD SPECIFICATIONS FOR ROAD AND BRIDGE CONSTRUCTION, LATEST EDITION. ALL DISTURBED AREAS WILL BE SODDED WITHIN ONE (1) WEEK OF INSTALLATION OF SAID PERMITTED WORK.
- ALL PUBLIC SIDEWALK CURB RAMPS WILL MEET THE STANDARD PLANS FOR ROAD AND BRIDGE CONSTRUCTION (CURRENT EDITION) INDEX NO. 522-002 CURB / RAMP INSPECTIONS REQUIRED PRIOR TO INSTALLATION OF CONCRETE.
- RESTRICTED HOURS OF OPERATION FOR LANE CLOSURES WILL BE FROM 9:00AM TO 4:00PM (MONDAY-FRIDAY) UNLESS OTHERWISE APPROVED BY THE OPERATIONS ENGINEER OR DESIGNEE. MOT SHALL BE PICKED UP BY 4:00PM AND NOT START BEFORE 9:00AM.
- PERMITEE WILL COORDINATE (I.E. PRE-CONSTRUCTION MEETINGS, INSPECTIONS, FINAL ACCEPTANCE OF WORK, ETC.) WITH DAVID MOORE OF FERROVAL SERVICES @ 954-317-8044 OR EMAIL DAVID.MOORE@FERROVALSERVICES.COM. COORDINATION WILL INCLUDE A PRE-CONSTRUCTION MEETING.
- PERMIT IS VALID FOR ONE YEAR FROM DATE OF ISSUE.
- PERMITEE WILL PROVIDE THE DEPARTMENT WITH CERTIFIED "AS-BUILTS" PLANS PRIOR TO FINAL ACCEPTANCE OF THE PERMITTED WORK.

PERMITEE PLEASE NOTE - PERMITEE'S CONTRACTORS THAT ARE PERFORMING WORK ACTIVITIES SHALL PROVIDE THE FDOT (PERMIT OFFICE) PROOF OF A PROPER STATE CONTRACTORS LICENSE AND CERTIFICATE OF LIABILITY INSURANCE PRIOR TO ANY COMMENCEMENT OF PERMITTED WORK.



CONCRETE PAVEMENT & SIDEWALK JOINTS

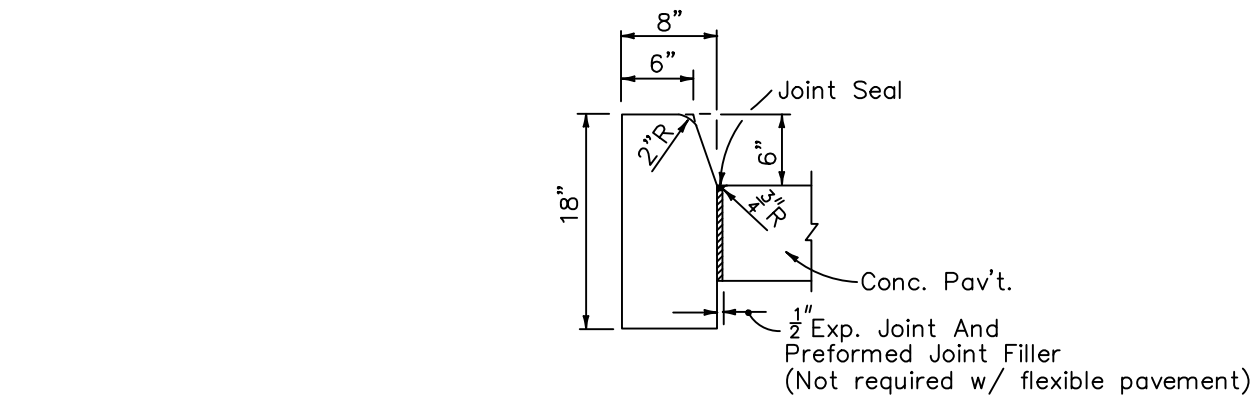
TABLE OF SIDEWALK JOINTS	
LOCATION	
P.C. AND P.T. CURVES	
JUNCTION OF EXISTING AND NEW SIDEWALKS	
5'-0\"	
15' CENTER TO CENTER MAX. FOR CONCRETE PAVEMENT UNLESS OTHERWISE INDICATED.	

NOTE: CONCRETE TO BE CLASS-1 3000 P.S.I.

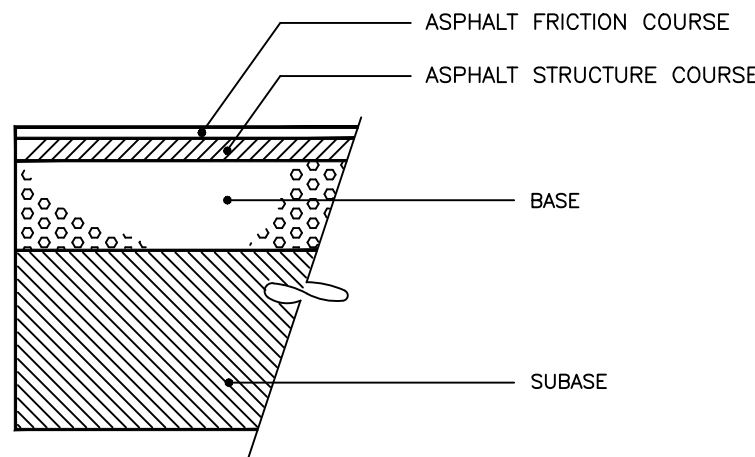
- PROVIDE 1/8\"
- PROVIDE 6\"
- NO REINFORCEMENTS SHALL BE USED IN THE SIDEWALKS.
- CONCRETE TO BE 3,000 PSI IN 28 DAYS.
- CURE ALL CONCRETE WITH CLEAN SAND, PLASTIC MEMBRANE OR OTHER APPROVED METHOD.
- CONCRETE PAVEMENT FOUNDATION SHALL BE COMPACTED TO A FIRM, EVEN SURFACE, TRUE TO GRADE AND CROSS SECTION, AND SHALL BE MOIST AT THE TIME CONCRETE IS PLACED
- ALL CONSTRUCTION SHALL CONFORM TO LOCAL CONSTRUCTION CODES AND STANDARDS

CONCRETE PAVEMENT + SIDEWALK DETAIL

NTS



TYPE D
CONCRETE CURB
N.T.S.
(REFER TO FDOT STANDARD INDEX 300)



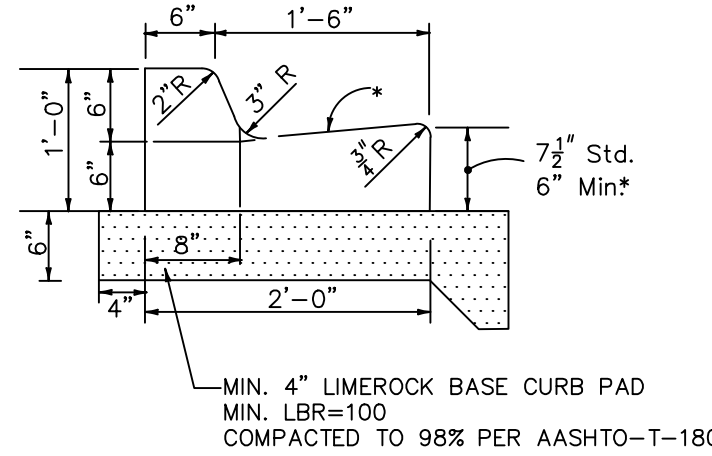
- ASPHALT FRICTION COURSE : 1.5\"
- ASPHALT STRUCTURE COURSE : 2.5\"

- PRIME & TACK COAT : PRIME & TACK COAT FOR THE BASE COURSE SHALL CONFORM TO THE REQUIREMENTS OF F.D.O.T. STANDARD SPECIFICATIONS SECTION 300.

- BASE : 15\"

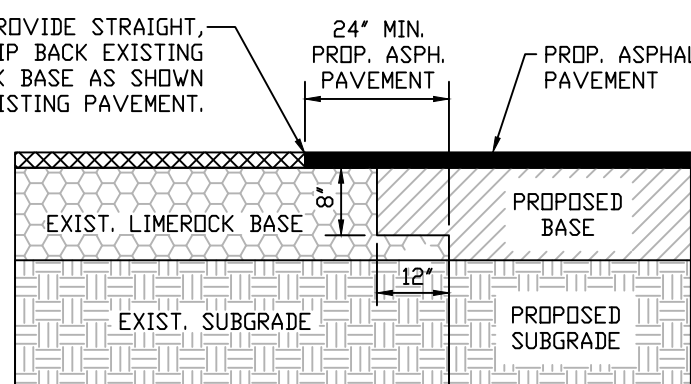
- SUBBASE : 12\"

FDOT PAVEMENT DETAIL
N.T.S.

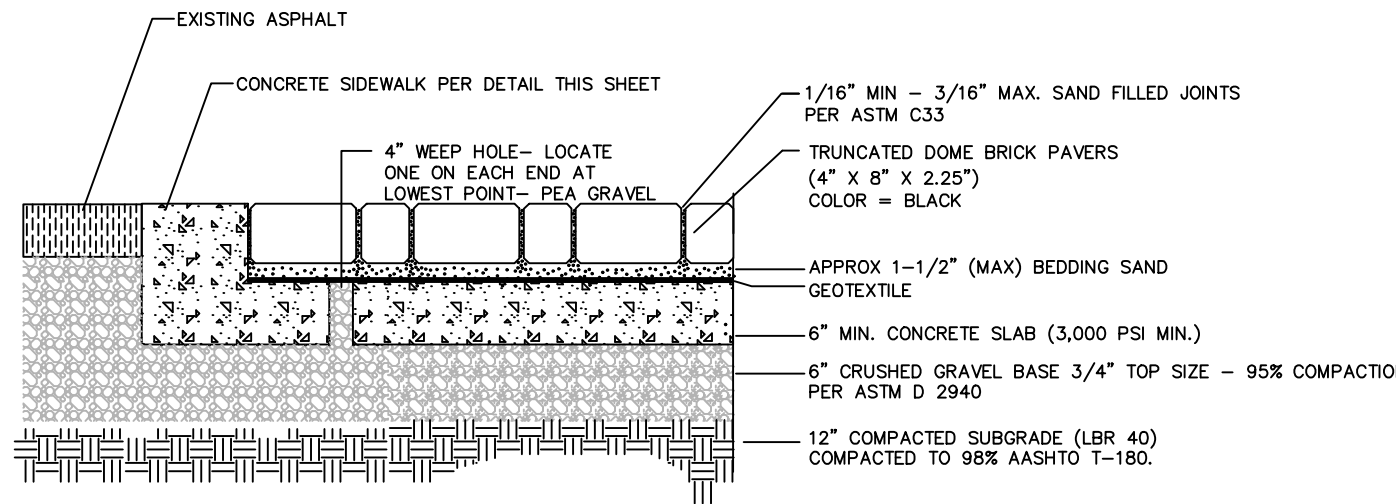


* When used on high side of roadways, the cross slope of the gutter shall match the cross slope of the adjacent pavement. The thickness of the lip shall be 6\", unless otherwise shown on plans.

TYPE F
CONCRETE CURB AND GUTTER
N.T.S.
(REFER TO FDOT STANDARD INDEX 300)



F.D.O.T. PAVEMENT CONNECTION DETAIL
N.T.S.

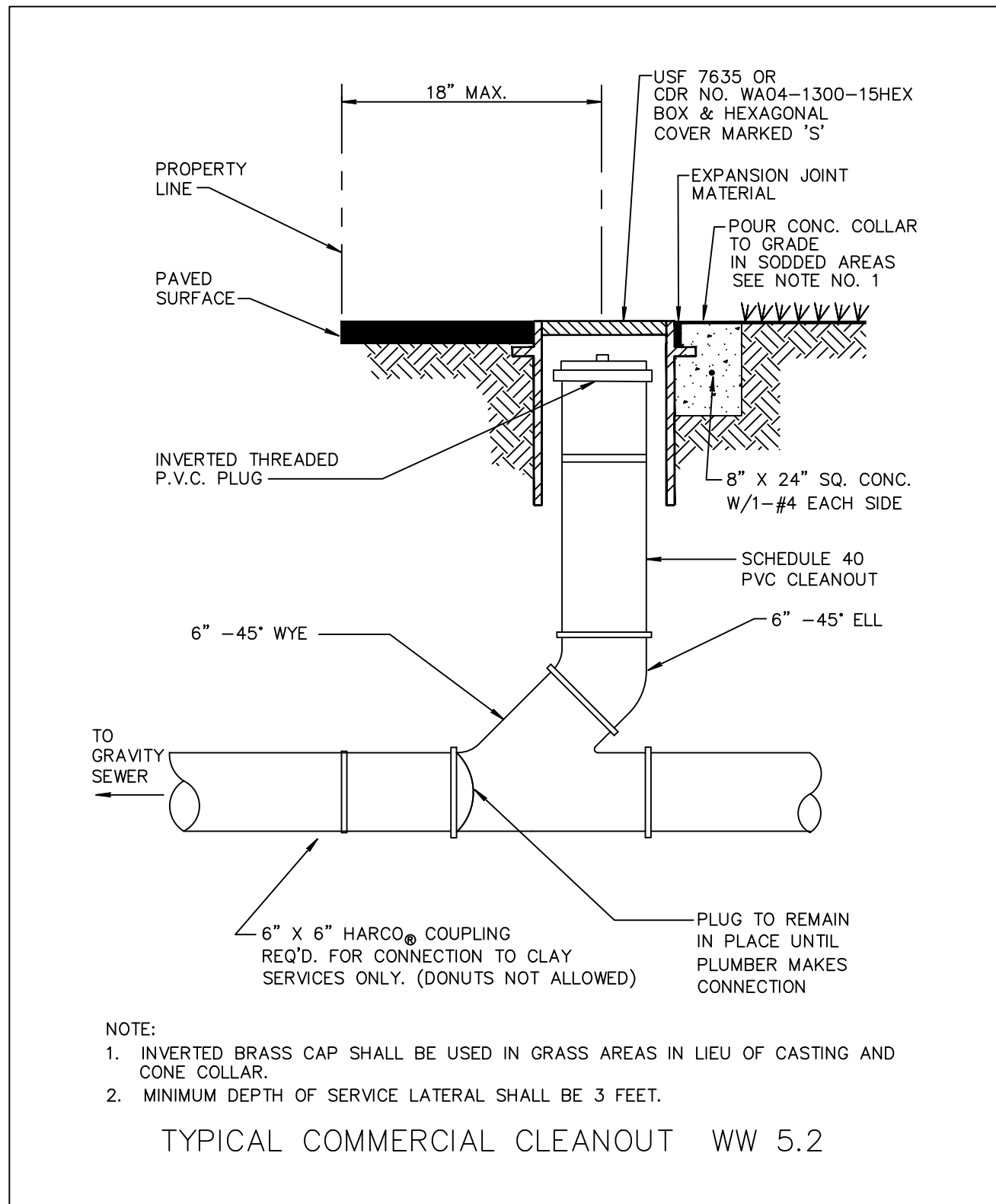


INSET TRUNCATED DOME BRICK PAVERS

N.T.S.

COLOR=BRICK RED

PATTERN=HERRING BONE DIAGONAL (45°)



- NOTE:
- INVERTED BRASS CAP SHALL BE USED IN GRASS AREAS IN LIEU OF CASTING AND CONE COLLAR.
 - MINIMUM DEPTH OF SERVICE LATERAL SHALL BE 3 FEET.

TYPICAL COMMERCIAL CLEANOUT WW 5.2

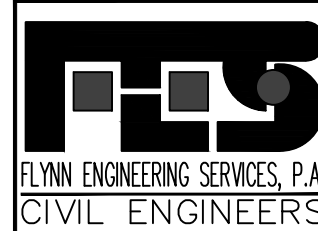


THIS ITEM HAS BEEN DIGITALLY SIGNED AND SEALED BY DENNIS R. SHULTZ, P.E. ON Jan 10, 2019

PRINTED COPIES OF THIS DOCUMENT ARE NOT CONSIDERED SIGNED AND SEALED AND THE SIGNATURE MUST BE VERIFIED ON ANY ELECTRONIC COPIES

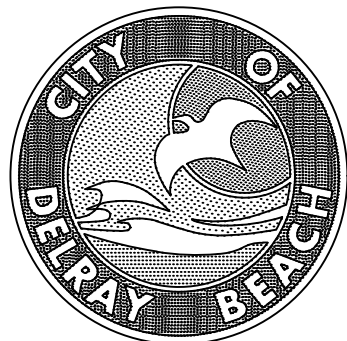
FDOT PERMIT NUMBER 2018-C496-010

NOT TO SCALE



241 COMMERCIAL BLVD.
LAUDERDALE BE BY THE SEA, FL 33308
PHONE: (954) 522-7004
FAX: (954) 522-7630
www.flynnengineering.com
EB# 6578

FES# 16-1309.01



CITY of DELRAY BEACH
ENVIRONMENTAL SERVICES DEPARTMENT
434 SOUTH SWINTON AVENUE, DELRAY BEACH, FLORIDA 33444
Phone: (561) 243-7322 Fax: (561) 243-7060 www.mydelraybeach.com

LANDSCAPE ARCHITECT
EDSA, INC.
1512 E. BROWARD BOULEVARD
SUITE 110
FORT LAUDERDALE, FLORIDA 33301

CIVIL ENGINEER
FLYNN ENGINEERING
241 COMMERCIAL BOULEVARD
LAUDERDALE-BY-THE-SEA, FLORIDA 33308

ENVIRONMENTAL ENGINEER
OCEAN CONSULTING
340 MINORCA AVENUE
SUITE 6
CORAL GABLES, FLORIDA 33134

MECHANICAL, ELECTRICAL, AND PLUMBING
CREDO CONSULTING ENGINEERS
800 E. BROWARD BOULEVARD
SUITE 601
FORT LAUDERDALE, FLORIDA 33301

SURVEY
AVIROM & ASSOCIATES
50 S.W. 2ND AVENUE
SUITE 102
BOCA RATON, FLORIDA 33432

SEAL

DESIGNED BY
DRAWN BY
CHECKED BY

DATE JANUARY 2019

REVISION

DATE

DESCRIPTION

BEACH MASTER PLAN - PH 2
ISSUED FOR BID



ENGINEERING DETAILS

PROJECT NO.
15-008(2)

SHEET NO.

C-108

FILE ID.